

HydroBeam S2

Dual-Channel Echo Sounder



The HydroBeam S2, SatLab's latest dual-channel echo sounder, is designed to simplify your bathymetric surveys. Powered by Windows 10 and featuring the advanced SmartEcho 2.0 algorithm and full-featured SLHydro Sounder software, it offers a complete, out-of-the-box solution. With its built-in temperature sensor and durable IP66 housing, the HydroBeam S2 is the ultimate tool for efficient and reliable data collection.



New Generation, More Powerful



Reliable Acquisition Unit

The S2 not only integrates a more powerful IPC with 1TB of storage memory, but also passes rigorous salt spray, water immersion, and shock resistance tests for superior durability and reliability, meeting IHO standards.



High Precision Transducer

New transducer has integrated temperature sensor to calculate real-time velocity of sound and correct the bathymetric data.



New SmartEcho 2.0 Algorithm

SmartEcho 2.0 algorithms not only enhance auto-tracking in rugged terrain, but also improve substrate identification for sediment and high sand content applications.

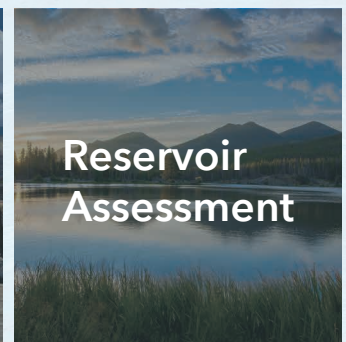
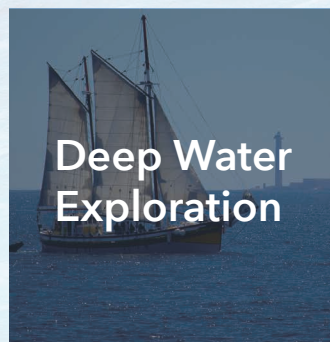
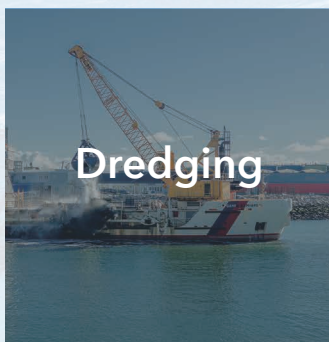


Enhanced SLHydro Sounder Software

SLHydro Sounder not only provides a complete workflow for connection, acquisition, processing, and export, but also offers a wide range of correction for attitude, PPK, delay etc.



Applications



Specification

Echo Sounder

Dimension	441mm*105mm*324mm
Weight	8.1kg
Housing Material	Magnesium alloy
Waterproof Rate	IP66
Ping Rate	50Hz
Screen	15 inches; Resolution: 1280 x 1024@60Hz
CPU	2.0GHz, Quad-core
RAM	16GB
Storage	128GB + 1TB SSD
Input Power	10-30VDC, 110-240VAC
Power Consumption	50W
Operating Temperature	-5°C to +55°C
Storage Temperature	-20°C to +60°C
Interfaces	PPS*1, Trigger*1, RJ45*1, RS232*3, USB*3, HDMI*1, Transducer*1, Power*1
Raw Data Output Format	Standard NMEA 0183, DESO 25, ODOM, Knudsen, Bathy, Echotrac

Transducer

Transducer Type	High Channel	Low Channel
Operation Frequency	100kHz ~ 1MHz	10kHz ~ 50kHz
Depth Range	0.15 ~ 300m @200kHz	1~ 2000m @24kHz
Accuracy	±0.01m ± 0.1% of depth @200kHz	±0.1m ± 0.1% of depth @24kHz
Resolution	1cm@200kHz	10cm@24kHz
Temperature Sensor	-55°C to +125°C; Resolution 0.5°C	



* All parameters listed are theoretical or based on laboratory test.

* Specifications and accessories are subject to change. We reserve the right to the final interpretation.



Headquarters:

Geosolution i Göteborg AB
Stora Ävågen 21, 436 34 ASKIM,
Sweden

Regional Offices:

Warsaw, Poland
Jičín, Czech Republic
Ankara, Turkey
Scottsdale, USA
Singapore
Hong Kong, China
Dubai, UAE

www.satlab.com.se