

# Cygnus Lite

Lightweight Handheld SLAM Scanner



# Cygnus Lite Handheld SLAM Scanner

The lightweight Cygnus Lite handheld LiDAR scanner redefines data collection with its 20° tilt mechanism, dual wide-angle cameras, and an integrated RTK module. It captures unprecedented detail and vibrant color in every scan, ensuring your data is comprehensive and exceptionally accurate.



1.0 kg  
Lightweight



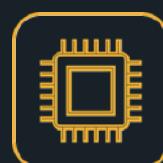
Ultimate  
Efficiency



Realistic  
Colorization



SLAM & RTK  
Superb  
Accuracy



Onboard  
Processing



## Features



### Compact Design, Wider Coverage

The innovative 20° tilt angle lets the laser scanner capture a wider range of scans in its standard handheld configuration, thereby minimizing any potential data missing and gaps.

### Realistic Reconstruction with Cameras

With two 12 MP HD cameras, Cygnus Lite captures clear imagery for point cloud RGB colorization with full field of view coverage, delivering highly realistic and detailed 3D reconstructions.



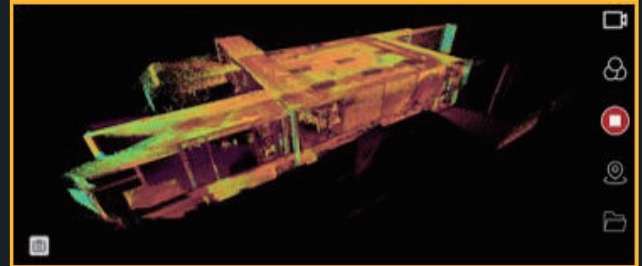
### Enhanced Accuracy via Built-in RTK

The Cygnus Lite utilizes advanced RTK and SLAM technologies to deliver stable, accurate, and reliable positioning data. It features a high-precision multi-constellation, multi-frequency GNSS module for enhanced performance.

# Software

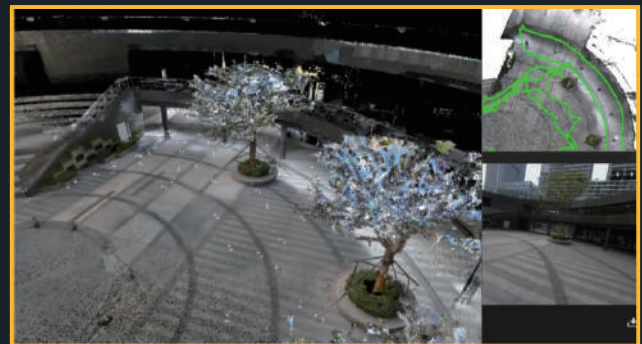
## SatPoint APP

In SatPoint APP on mobile, the ultimate simple plug-and-play operation allows anyone to become a 3D scanning expert in minutes. Real-time color point cloud gives you the assurance that everything you want will be seen and precisely captured.



## SatPoint PC

After scanning, SatLab SatPoint PC software can be used to generate and export point cloud data of flawless quality. Data can be measured more intuitively through the combination of image and point cloud overlay.

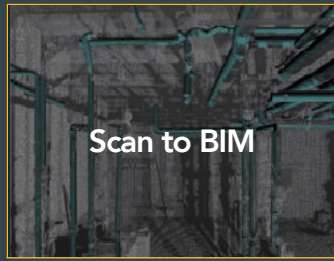
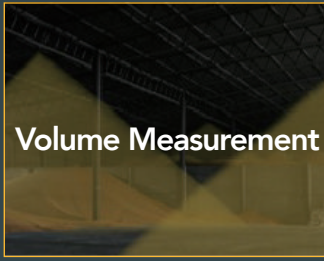


# Inside the Box

- Cygnus Lite Mainframe
- 2 Handle Batteries
- GCP Benchmark
- Type-C Cable
- Type-C Charger
- TF Card 256GB
- Polishing Cloth
- MagSafe Ring
- SatPoint PC USB Dongle



# Scenarios



# Technical Specifications

<b>System</b>	RTK Performance	0.8 cm + 1 ppm (H) 1.5 cm + 1 ppm (V)
	Processing	Real-time processing Post processing
	Range Noise	±1 cm
	Accuracy Indoor	±2.5 cm
	Precision Indoor	±1 cm

<b>Operation</b>	SatLab SatPoint APP for Android OS including live 3D in colorized mode, intensity mode and elevation mode while scanning, device control, device status and data management.	
	Android 12 or higher recommended devices: Samsung Galaxy S22, S23, S24.	
	Support MagSafe stand for mobile devices.	

<b>Environment</b>	Robustness	Designed for indoor and outdoor use
	Temperature	Operating: -20 ~ +55 °C Storage: -20 ~ +60 °C
	IP Rating	IP54

<b>LiDAR &amp; Imaging</b>	Camera	12 MP * 2
	Camera FOV	360 * 270°
	Laser Class	1
	LiDAR FOV	360 * 59°
	Point Measurement Rate	200,000 pts/sec
	Frequency	10 hz
	Range	0.1 ~ 40 m @ 10% 0.1 ~ 70 m @ 80%

<b>Physical &amp; Electrical</b>	Weight	1.0 kg (With battery)
	Size (mm)	297 * 103 * 104 (With battery) 133 * 104 * 103 (Mainframe)
	Battery	3150 mAh * 2 (Max. 90 mins battery life for each)
	Input	14.4 v
	Charging	Type-C, PD-30 W (Average 1.5 hr charging time )

<b>Data Transfer</b>	Format	.las, .pcd, .ply
	Detachable Storage	TF Card, 256GB, max 512GB extendable
	Data Transfer	Wireless and USB 3.0
	Desktop Software	SatLab SatPoint PC



**Headquarters:**  
Geosolution i Göteborg AB  
Stora Ävägen 21  
436 34 ASKIM, Sweden  
info@satlab.com.se

**Regional Offices:**  
Warsaw, Poland  
Jičín, Czech Republic  
Ankara, Turkey  
Scottsdale, USA  
Singapore  
Hong Kong, China  
Dubai, UAE

[www.satlab.com.se](http://www.satlab.com.se)

