

# Specification

<b>Operation system</b>	Microsoft Windows 7/ 8/ 10/ 11
<b>Processor</b>	Intel Core i5 (Recommended) Intel Core i3 (Minimum)
<b>RAM</b>	8GB (Recommended) 4GB (Minimum)
<b>ROM</b>	1TB (Recommended) 1GB (Minimum)
<b>GPU</b>	Direct X9 compatible 2GB discrete graphics (Recommended) Direct X9 compatible integrated graphics (Minimum)
<b>Software License</b>	Software registration code USB dongle driver
<b>Supported Language</b>	English/ French/ Spanish/ Portuguese/ Japanese
<b>Features</b>	Intuitive workflow QC quality inspection Legend encoding Support RTK/ Total Station Road Design/ DTM work Online map Intersection Instruction manuals Property configuration Tolerance calculations Height grid tool Coordinate system management Antenna management Rinex convert Parameter calculation widget Conversion tools
<b>Practical Tools</b>	



**Headquarters:**  
Geosolution i Göteborg AB  
Stora Ävägen 21, 436 34 ASKIM,  
Sweden

**Regional Offices:**  
Warsaw, Poland  
Jičín, Czech Republic  
Ankara, Turkey  
Scottsdale, USA  
Singapore  
Hong Kong, China  
Dubai, UAE

[www.satlab.com.se](http://www.satlab.com.se)



24M222



# SatLab Geobiz Solutions 2.0

— All-in-One Post-Processing Desktop Software



## All-in-One Post-Processing Desktop Software

Satlab Geobiz Solutions 2.0 is an integrated office software incorporating modules such as GNSS, RTK, Total Station, and UAV. It eliminates the need to switch between different data processing software, simplifies the workflow, and improves the data processing efficiency. Satlab Geobiz Solutions 2.0 is very suitable for processing data collected from multiple types of surveying products within the same project.



Through advanced static, rapid static, PPK, and PPP algorithms to process GNSS data, and the PPK post-processing results can be used to check field coordinates.



Supports importing RTK project data, processing and sorting RTK data on a larger screen conveniently and intuitively. It supports Total Station traverse adjustment at the same time.



Supports road design, preview, verification and other work on the computer side, and also supports earthwork calculation.



SGS2.0 offers an extensive toolset, including coordinate and RINEX converters, angular, distance, and various COGO calculation tools, GNSS antenna managers, and GNSS observation files merging.

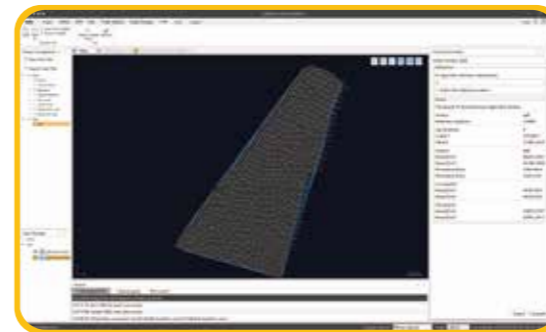
## KEY FUNCTIONS



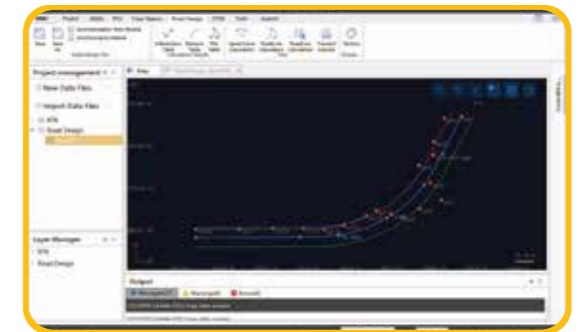
GNSS Data Processing



Mapping



DTM



Road Design

### POST-PROCESSING

- Stop&Go-Static-Kinematic
- Multiple baseline processing
- Network Adjustment
- Loop closure
- PPP Processing
- Data Quality Analysis
- Rinex Conversion

### TOPOGRAPHY

- Multi-project Management
- Parameters Calculation
- Framework Shifting
- Code List
- Grid to Ground
- Traverse Adjustment
- DTM&Volumes Calculation

### TOOLS

- Antenna Management
- Angle&Dist. Conversion
- Height Grid
- Coordinate Conversion
- Online Map